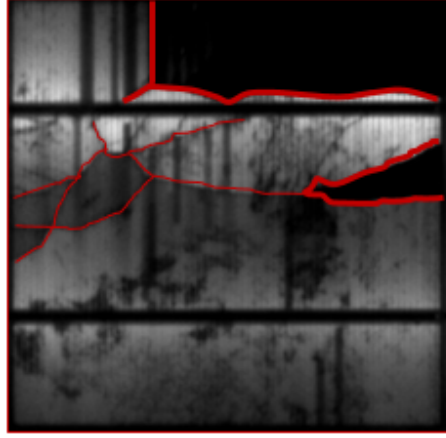
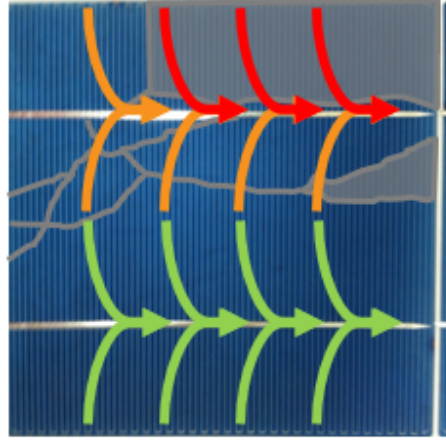


Cell Cracking in P-Series

Conventional Cell¹

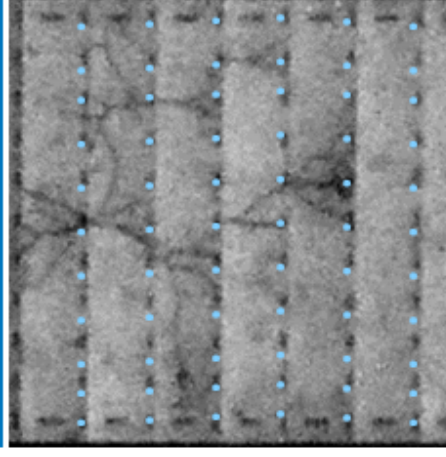


Cracks propagate until they encounter a ribbon or the edge of the cell

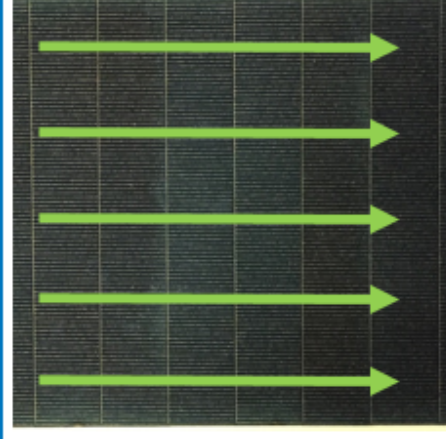


Current flows along silver lines to the ribbon so cracks prevent current from reaching the ribbon

SunPower® Performance Series



Short cell length, 1 inch, limits crack propagation, mitigating isolation of cracked cell areas



Highly redundant conductive adhesive connections act as a "mesh" to contain cracks and maintain current flow

Redundant connections limit power loss from cracks in P-Series

¹ Kontges, et. al. "Performance and Reliability of Photovoltaic Systems, Subtask 3.2: Review of Failures of Photovoltaic Modules." 2014.